

EPSON®

Introducing SureColor® P20570

Sales Reference Guide v1.1



64" History & Leadership

Quality | Reliability | Innovation

2008



Epson Stylus® Pro 11880

2016



Epson SureColor P20000

2024



SureColor P20570

SureColor P20570

The Art of Performance

Introducing our latest 64" large-format printer.

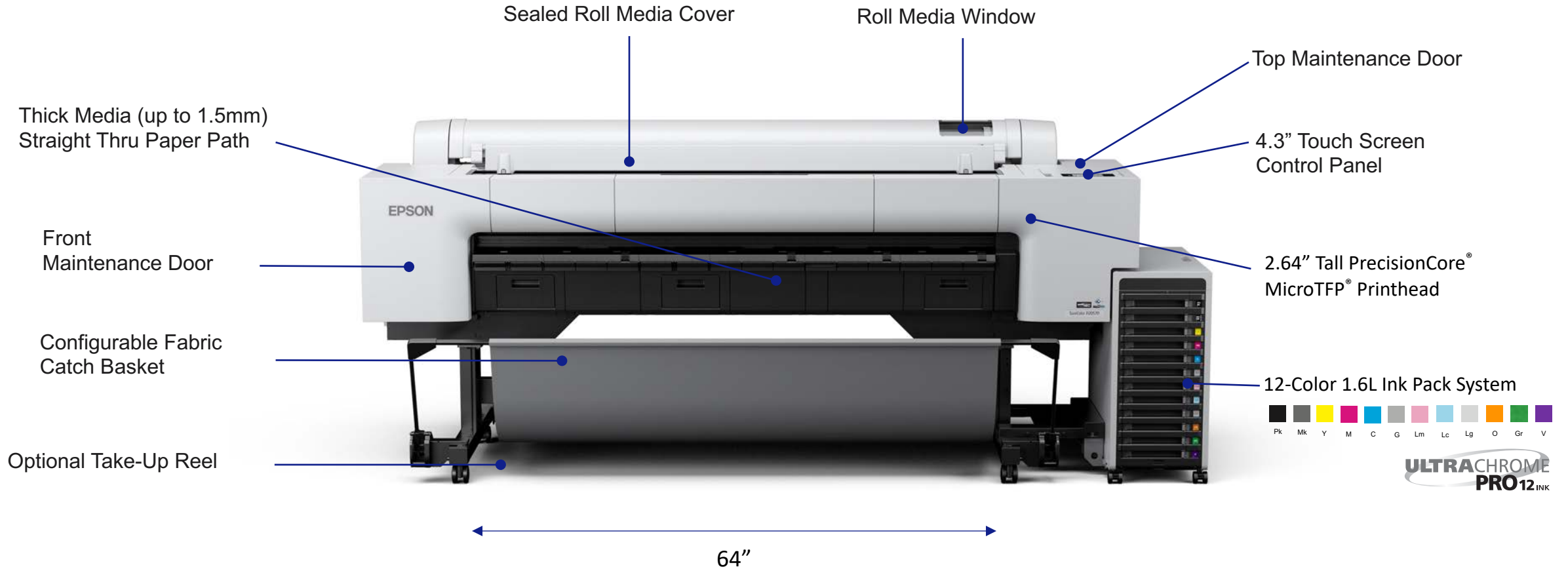
Built on our legacy of excellence, this advanced printer sets new standards for professional photography, fine art reproduction and graphic design.

The SureColor P20570 remains the state of the art in professional printing.



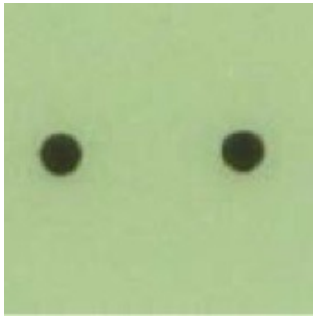
Key Features

SureColor P20570

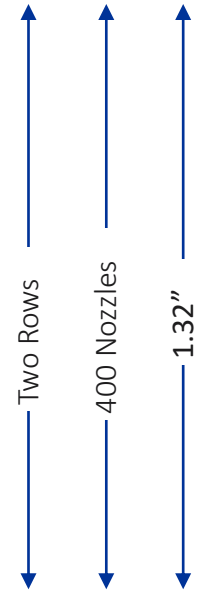
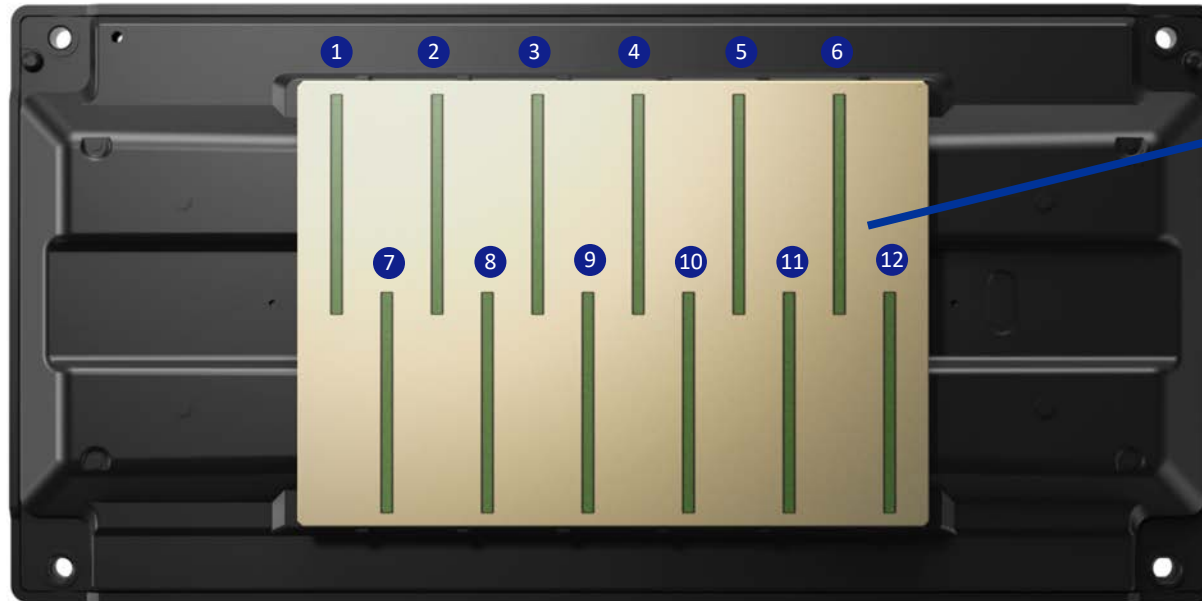


12-Channel PrecisionCore MicroTFP Printhead

Simple | Smart | Clean



Actual Ink Droplet on Paper
150x Magnification



Industrial Quality Built for the life of the printer
Variable-Sized Droplets Ensures outstanding quality at high speeds
Nozzle Verification Technology Fewer nozzle clogs

Single PrecisionCore Print Chip
has 800 Nozzles, $800 \times 12 = 9600$





UltraChrome® PRO12 Ink

Widest color gamut in its class¹

99% match of PANTONE Formula Guide solid coated colors²

Industry leading print permanence³

1.6 Liter bulk ink pack system

Ink packs use up to 90% less plastic vs cartridges⁴

Reduced cartridge changes



1. Versus comparable professional large-format (24", 44" and 64") photographic and fine art printers as of March 1, 2024. Based on total gamut volume measured on comparable media
2. 99% coverage of PANTONE® Solid Coated color palette based on Epson Proofing Paper White Semimatte printed with the Epson Driver at 2400 x 1200 dpi. PANTONE coverage may vary when printed under other conditions
3. Print permanence in testing. Wilhelm Imaging Research lightfastness ratings are based on accelerated testing of prints on specified media, displayed indoors, under glass. Actual print stability will vary according to media, printed image, display conditions, light intensity, humidity and atmospheric conditions. Epson does not guarantee longevity of prints. For maximum print life, display all prints under glass or UV-absorbing acrylic and protect them from prolonged high-humidity environments. Visit www.wilhelm-research.com for the latest information
4. Ratio determined by weight of 1,600mL ink pack plastic components vs. weight of 700mL cartridge plastic components for UltraChrome Pro inks

Epson UltraChrome PRO12



Black Enhance Overcoat Technology

High Gloss Papers

Higher black density than SureColor P20000 on high gloss papers

Increases contrast with smoother tonal gradations on glossy papers

Mode built directly into the print driver

No special ink overcoat needed

Before

After



Image Simulated

Versatile Media Handling

Spindle-less Design – Support for 10”- 64” rolls

Auto Cut – New options for managing thick fine art media

Thick Sheet and Poster Board Support – up to 1.5 mm thick

BorderFree® Printing – Four-sided borderless capability reduces labor and finishing time



Intuitive Operation & Enhanced Connectivity

Large 4.3" LCD touch panel

- Easy setup, printer control and maintenance

Enhanced speed and operation

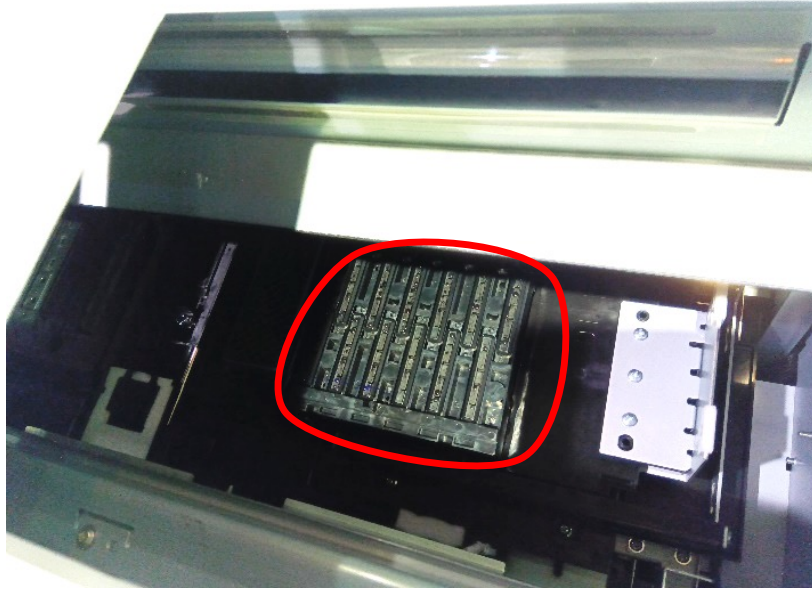
- High-speed system on a chip (SoC) enables fast printer operation and reduced spooling time

Enhanced connectivity includes

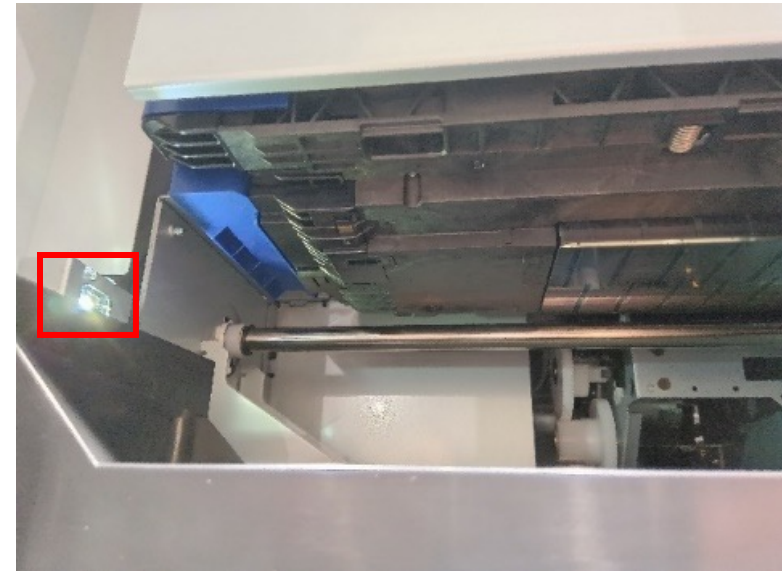
- Gigabit Ethernet
- SuperSpeed USB 3.0



Improved Maintenance



Easy access to capping station



Internal light for improved viewing of printhead

End User self cleaning helps improve productivity and reduces downtime

Advanced Software

Epson Print Layout

Streamlined and simplified photo printing application

OS X 10.10 or later, Windows 7 or later, iOS, iPadOS,
Photoshop® export plug-in

Integrated ICC support for Epson media

Live print preview of Advanced Black-and-White Mode



Epson Media Installer

Manages media and printer mechanical parameters

Imports non-Epson branded media

Synchronizes with Epson Print Layout, Epson Edge® Print
Pro, printer driver and printer control panel

Media Type	Media Name	Notifications/Status	Editable	Removable
Photo Paper	Baryta	Not Acquired		
Proofing Paper	Epson Proofing Paper White Semimatte	Not Acquired		
Proofing Paper	Epson Proofing Paper Commercial	Not Acquired		
FineArt Paper	Wheat Fine Art Paper	Not Acquired		
FineArt Paper	Watercolor Paper Radiant White	Not Acquired		
FineArt Paper	UltraSmooth Fine Art paper	Not Acquired		
FineArt Paper	Fine Art Matte	Not Acquired		
FineArt Paper	Washi	Not Acquired		
Matte Paper	Doubleweight Matte Paper	Not Acquired		
Matte Paper	Enhanced Matte Paper	Not Acquired		
Matte Paper	Ultra Premium Presentation Paper Matte	Not Acquired		
Matte Paper	Singleweight Matte Paper	Not Acquired		
Matte Paper	Presentation Paper Matte	Not Acquired		
Matte Paper	Enhanced Matte Poster Board	Not Acquired		
Canvas	Canvas Matte	Not Acquired		
Canvas	Canvas Satin	Not Acquired		
Plain Paper	Plain Paper / Bright White Paper	Not Acquired		
Others	Heavy Weight Polyester Banner	Not Acquired		
Others	Enhanced Synthetic Paper	Not Acquired		
Others	Enhanced Adhesive Synthetic Paper	Not Acquired		
Others	Enhanced Low Adhesive Synthetic Paper	Not Acquired		
Others	Synthetic Paper(Low Duty)	Not Acquired		
Others	Adhesive Synthetic Paper(Low Duty)	Not Acquired		
Others	Backlight Film Roll PK	Not Acquired		
Others	Backlight Film Roll MK	Not Acquired		
Others	Backlight Film(Low Duty) PK	Not Acquired		
Others	Backlight Film(Low Duty) MK	Not Acquired		

Epson Edge Print PRO

Software RIP Included

Simple tool for production printing

Fully developed by Epson

Uses Epson optimized color Look Up Tables

Works with Epson Media Installer

Key Features

Adobe® PostScript 3

Image Nesting

Step & Repeat

Hot Folder operation

Quick Sets

Drive 4 printers at once

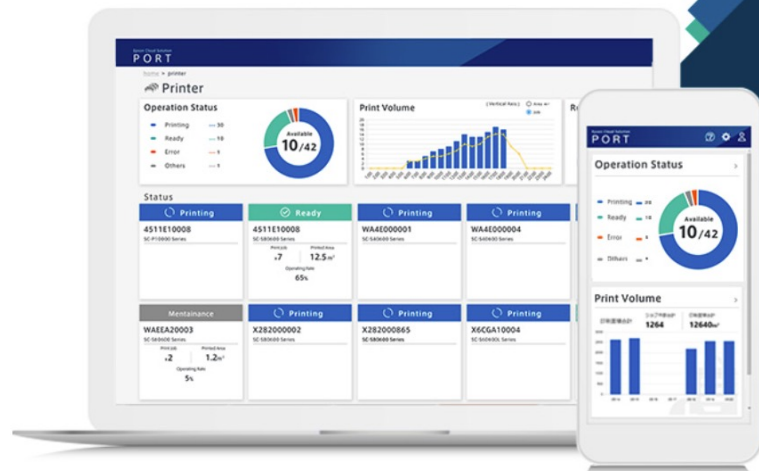
The screenshot displays the Epson Edge Print PRO software interface. At the top, there is a toolbar with icons for Delete, High Quality Preview, RIP, Print, Hold, and Cancel. Below the toolbar is a 'Job List' table with columns for Status, Added Date, Quick Sets Name, and Copies. The table shows a single job: '1/2024 2:1. Print Queue' added on '2024/01/10 14:13:26' with 1 copy. The main area shows a preview of a printed page with a grid of images, including a cathedral, a man holding a child, a mosque, a group of people, and a sunset. The 'Output Size' is 43.697 x 171.89(in). The 'Job Info' panel on the right shows 'Quick Sets: Custom', 'Nesting Job [1/10/2024 2:13:26 PM]', and 'File Information' including File Name, File Size, Created date, Number of Pages (19), Page Size, and Embedded Profile. The 'Settings and Estimation' panel shows 'Quick Sets Name: -', 'Output Size: 43.697 x 171.89(in)', 'Media Name: Premium Luster Ph', 'Print Quality: 600x600dpi - 6 Pas', 'Copies: 1', 'Spot Color Emulation: Off', 'Print Time (Estimated): 15 minutes', and 'Ink Usage (Estimate):'. A 'Confirm' button is at the bottom right.

Adobe® PostScript® 3™

Epson Cloud Solution PORT⁵

Cloud-based remote monitoring and reporting system

- Provides almost real-time view of printer fleet regardless of where the printer is located
- Web-based modules including usage and cost reporting features
- Improved service and support
- Simple and secure – enterprise level encryption



www.epson.com/PORT

Ordering Information

Description	Part Number
SureColor P20570 Professional 64" Printer – Standard Edition	SCP20570SE
Optional 960 GB internal SSD Drive	C12C936671
Optional Adobe PostScript 3 Expansion Unit	C12C939191
Optional Take-Up Reel Unit	C12C932201
Additional Roll Media Adapters	C12C932231
Maintenance Box	T619300
Auto Cutter Replacement Unit	C13S210040
Cleaning Sticks	C13S090013
Extended Warranty	Part Number
1 Year PS Onsite –Max 4 Plans: P20570	PSP20570S1
2 Year PS Onsite –Max 2 Plans: P20570	PSP20570S2
4 Year PS Onsite –Max 1 Plan: P20570	PSP20570S4
1 Year IW Onsite –Max 4 Plans: P20570	IWP20570S1

UltraChrome PRO 12 Inks	Part Number
Photo Black Ink 1.6 Liter	T56E120
Cyan Ink 1.6 Liter	T56E220
Vivid Magenta Ink 1.6 Liter	T56E320
Yellow Ink 1.6 Liter	T56E420
Light Cyan Ink 1.6 Liter	T56E520
Vivid Light Magenta Ink 1.6 Liter	T56E620
Gray Ink 1.6 Liter	T56E720
Matte Black Ink 1.6 Liter	T56E820
Light Gray Ink 1.6 Liter	T56E920
Orange Ink 1.6 Liter	T56EA20
Green Ink 1.6 Liter	T56EB20
Violet Ink 1.6 Liter	T56ED20

For pricing and availability, please contact your Epson authorized reseller.

Why Buy the SureColor P20570

- **Flagship** high-quality 64" large format printer
- **12-color UltraChrome PRO12** ink and widest gamut in its class³ and industry leading print permanence²
- **12-channel PrecisionCore MicroTFP Printhead** with Nozzle Verification Technology for automatic nozzle maintenance
- **High-Capacity 1.6 Liter Ink Pack System** for increased efficiency and up to 90% less plastic vs cartridges¹
- **Advanced Media Handling** with BorderFree printing, and support for posterboard and a wide variety of fine art and photo media
- **Improved Performance and Usability** featuring enhanced System on a chip (SoC) for faster performance with 4.3" touchscreen LCD
- **Black Enhance Overcoat** technology for increased black density on glossy papers with no special ink needed
- **Advanced Software Ecosystem** includes support for Epson Print Layout, Epson Cloud Solution PORT⁴ and Epson Edge Print PRO RIP for productivity



Specifications to change without notice



Epson, MicroPiezo, PrecisionCore, UltraChrome, SpectroProofer, BorderFree, SureColor and MicroTFP are trademarks or registered trademarks, Epson Preferred is a service mark, and EPSON is a registered logo mark of Seiko Epson Corp.

PANTONE® and other Pantone trademarks are trademarks or registered trademarks of Pantone LLC in the United States and/or other countries. PANTONE Trademarks used under License Agreement between Pantone LLC and Seiko Epson Corporation. All rights reserved.

All other product brand names are trademarks and/or registered trademarks of their respective companies.
Epson disclaims any and all rights to these trademarks.

© Epson America, Inc. 2024 April MA/RH v1.1